

DISPLAY CALLS / MESSAGES - DISPLAY CALLS / MESSAGES - mark as completed or delete

- 1) Messages / calls appear in the lower left corner of the clock with a letter icon.
- 2) Briefly press the PWR button to display all incoming messages. With PWR and MODE, you can now scroll between messages.
The call time of the respective message / call are also displayed if you choose to scroll between the individual messages. You will see them to the right of the letter icon.
To the right of the clock display is the respective message number that you currently have call for. i.e 1/3, would mean that you are watching the 1 message from total 3 calls.
- 3) If you on the display see a call / task that is already done(for example, that the table called number 3, but you have already gone there, and have taken the order), then the SET key can be pressed briefly, to point out to the clock that the task is solved. The letter icon for this task will then disappears in the display to signal to you that the task is done.
- 4) All messages received in total can still be seen by scrolling with PWR and MODE. However, if you at the end of the day want to clear all tasks / calls you can simply turn off the clock by holding down PWR, and all tasks are deleted irrevocably.

NAME OF EACH PART

Buttons	Description
<div>MODE</div> <div>Press it more than 2 seconds</div>	Entering into Mode / Exit to idle screen Conversion of numbers, English letters and special characters
<div>SET</div> <div>Press it more than 2 seconds</div>	Move to upper mode
<div>PWR</div> <div>Press it more than 2 seconds</div>	Power ON/OFF
<div><</div> <div>></div> <div>Press it once shortly</div>	Mode Shift, Digit Location Shift, Shift to receiving screen
<div>SET</div> <div>Press it once shortly</div>	Mode Selection, Setting Value Selection and Change



WARRANTY
One year warranty. The warranty is valid from the date of purchase. The warranty does not cover damage to the product resulting from improper use, abuse, accidents, force majeure or improper or improper electrical connection. If your product requires repair during the warranty period or if you need replacement, please send your product to: Discover Systems A/S, Magnoliavej 14, DK-5250 Odense SV. After the repair or the If replacement has taken place, we will send you back your product.

Copyright © November 2018 by Discover Systems AS. All rights reserved.

SOLT

Quick-Start for your SOLT SYSTEM



DISCOVER
SYSTEMS

- Thank you for purchasing Solt wireless calling system products.
- Specification and instructions are subject to change without notice.



DISCOVER
SYSTEMS

HELPDESK ASSISTANCE AND SUPPORT
Tel.: +45 70 22 00 56 • info@discoversystems.com

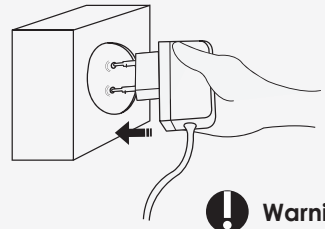
IMPORTANT SAFETY INSTRUCTIONS

Safety Instruction contains the information to prevent the unexpected risk or damage in advance by using the product in correct way and it should always be observed all the times.

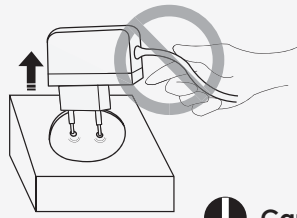
Warning This is for the case with the possibility of serious injury or death if this is not observed.

Caution This is for the case with the possibility of minor injury or damage to the product if this is not observed.

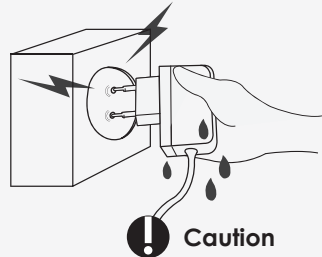
POWER PRECAUTIONS



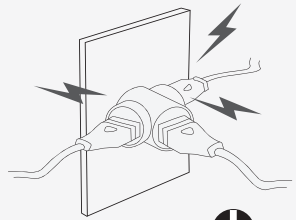
Be sure to insert the power plug to the end of the inner part. [If the connection is unstable, it may cause fire.]



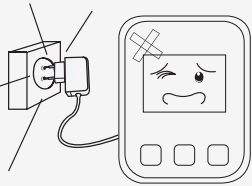
Be sure to unplug the power plug while holding it firmly. If cord is unplugged by pulling out, some parts of the cord can be disconnected and it may cause risky situation. [It may cause fire.]



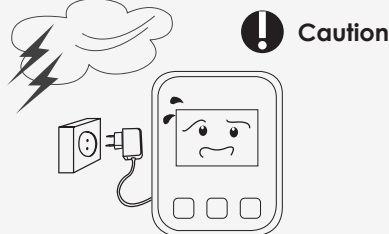
Do not touch the power plug with wet hand. [There is a risk of electric shock.]



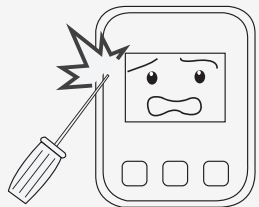
Do not use one socket for multiple devices at the same time. [It may cause fire due to overheating of the socket.]



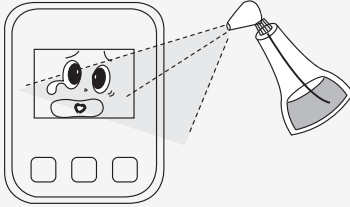
If power plug is dropped or case is broken, unplug the power cord. [If it is used as it is, it may cause fire or electric shock. Please contact service center.]



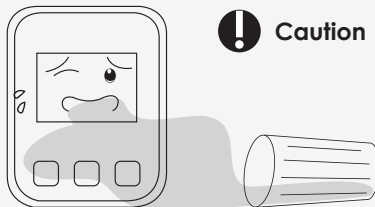
In case of thunderstorm or lightning or if the power plug is not used for long time, unplug the power cord. [There is the risk of electric shock or fire.]



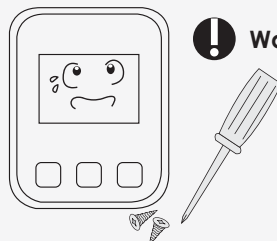
Do not harm or damage the unit with sharp object such as nail, pencil, or pen. [It will damage the surface of the unit and cause malfunction.]



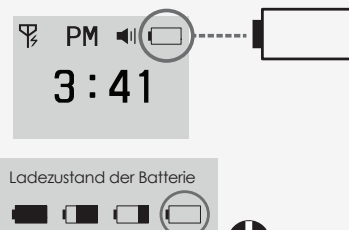
Do not clean the unit with water, benzene or paint thinner. [Damage to the insulation of electrical parts may cause malfunction.]



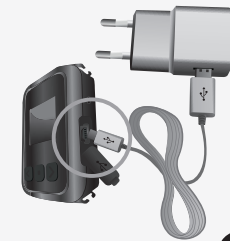
If foreign object enters the unit, please contact service center. [This may cause damage to the internal parts.]



Do not disassemble or modify the unit. If repair of the unit is required, please contact the service center.



When the battery icon indicates as marked in a circle, use it after recharging for more than 2 hours.



Use the supplied adapter. [Malfunctioning of supplied adapter during its use is not covered by manufactures' warranty.]

USE PRECAUTIONS

CONTENTS

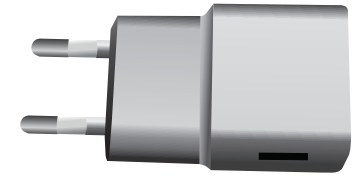
[Main Body]



[Wrist Band]

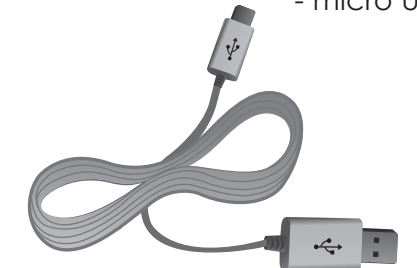


[Adapter - DC5V 1A]



Input: 100-240 V~50/60 Hz
Output: DC5V 1A

[Charging cables - micro USB]

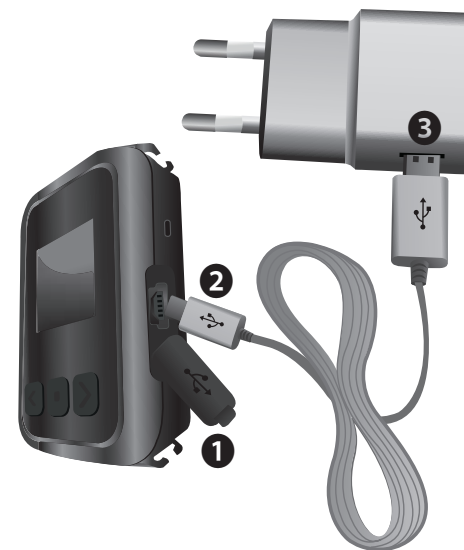


Specification

Model	SP7-100
Frequency (MHz)	433.0500 ~ 434.7900
Freq Stability	±5 ppm
Data Rate	1800 pbs
Channel space	12.5 KHz
Modulation	FSK (±3 KHz)
Sensitivity	-118 dBm (at Direct)
Power Supply	DC 3.7V/250mA Li-Polymer Battery (Rechargeable)
Dimension (mm)	37 × 49 × 13,5 (b×l×h)
Standby-time	about 30 Hour
Antenna	Helical (Internal)

RECHARGING INSTRUCTIONS/BATTERY - Please use only supplied adaptor.

Defect of the product caused by the use of other products will be repaired with charge. Limited accessory warranty. Malfunctioning of supplied adapter during its use is not covered by manufactures' warranty.



1. Open the USB cover of pager.
2. Connect micro USB jack to the connector of pager.
3. Plug the cord into the outlet after connecting adaptor and USB cable.

Battery charging level.



When the battery icon indicates as marked in a circle, use it after recharging for more than 2 hours.

discoversystems.com

Discover Systems AS • Magnoliavej 14 • DK-5250 Odense SV
Tel.: +45 70 22 00 56 • info@discoversystems.com